

# WELCOME!

---

- We'll get started momentarily.
- Your microphone, video, and chat features are not needed and will remain deactivated.
- To view closed captioning, select the *Closed Captioning* icon at the bottom of the screen or the three-dots icon then *View Sub-titles*.
- Please submit questions at any time in the Q&A feature.
- If you still have questions at the end of this session, please contact Health Center Program Support.





# Today with Macrae: Question & Answer

*Tuesday, October 17, 2023*

**Jim Macrae**

**Associate Administrator**

**Health Resources and Services Administration (HRSA), Bureau of Primary Health Care (BPHC)**

**Vision: Healthy Communities, Healthy People**

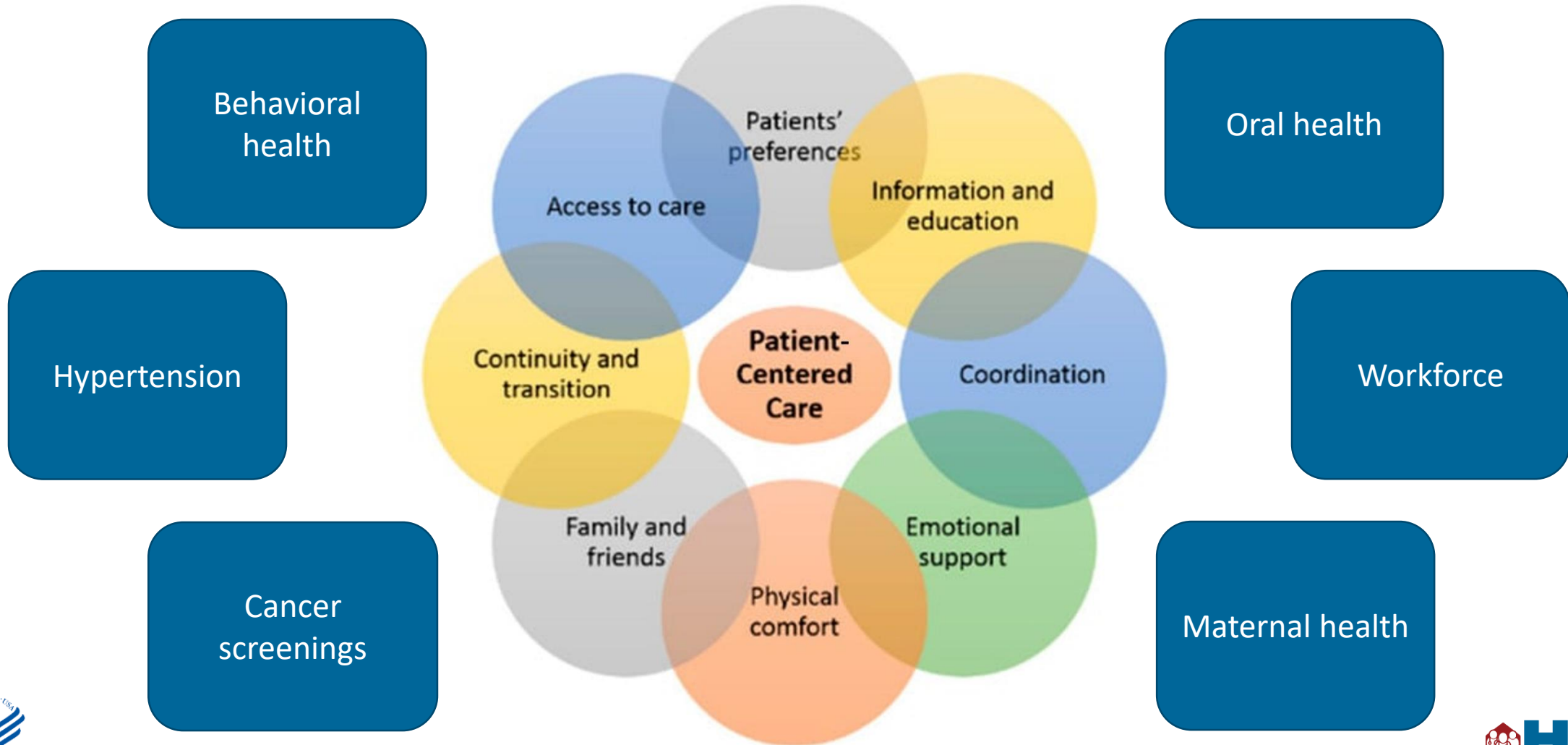


# Today with Macrae: Q&A

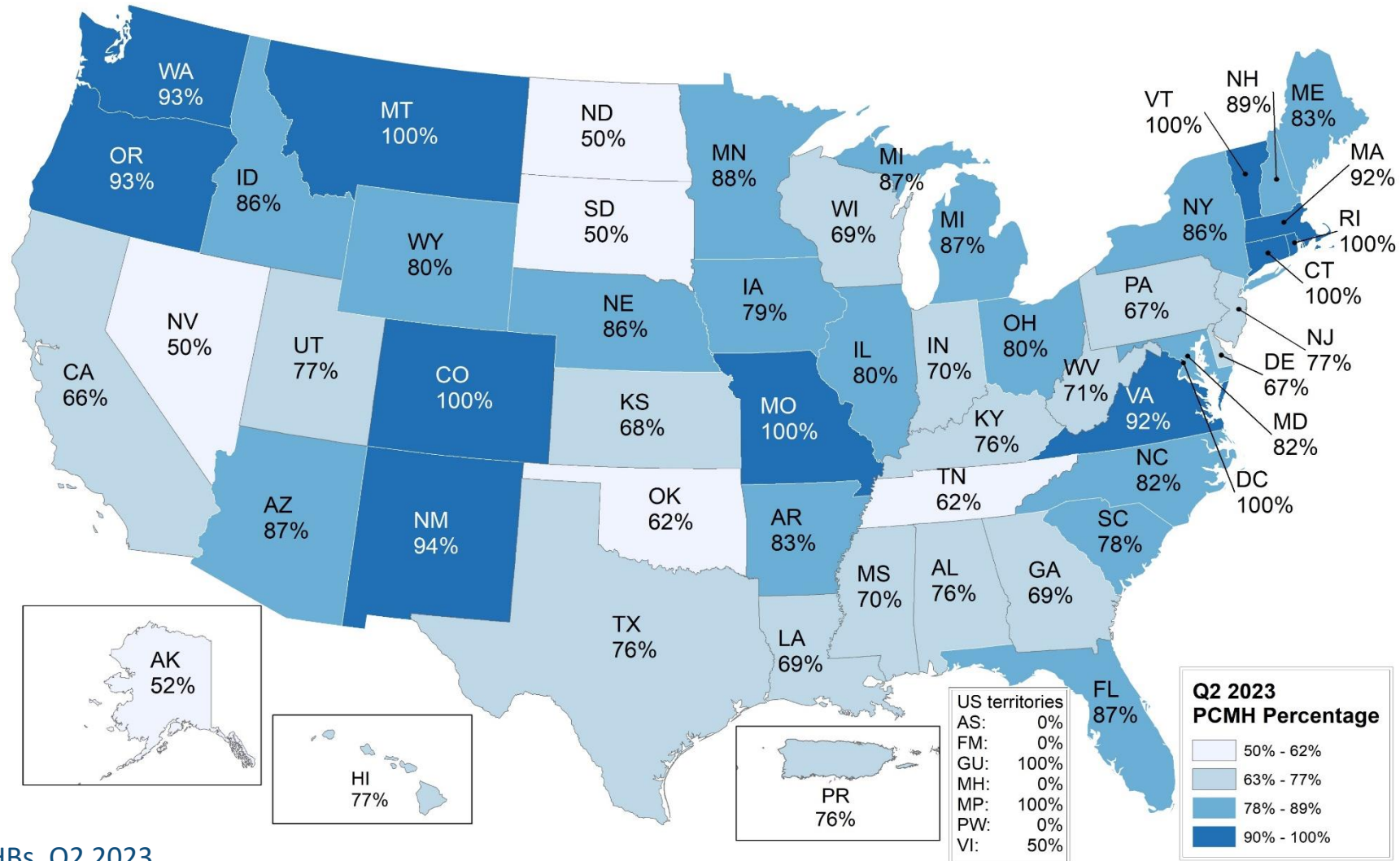
## AGENDA

- ☐ Health Care Quality Week
- ☐ Breast Cancer Awareness Month
- ☐ On My Mind
- ☐ Mark Your Calendar
- ☐ Q&A

# Patient-Centered Medical Home (PCMH): Connecting Preventive Care and Specialty Care



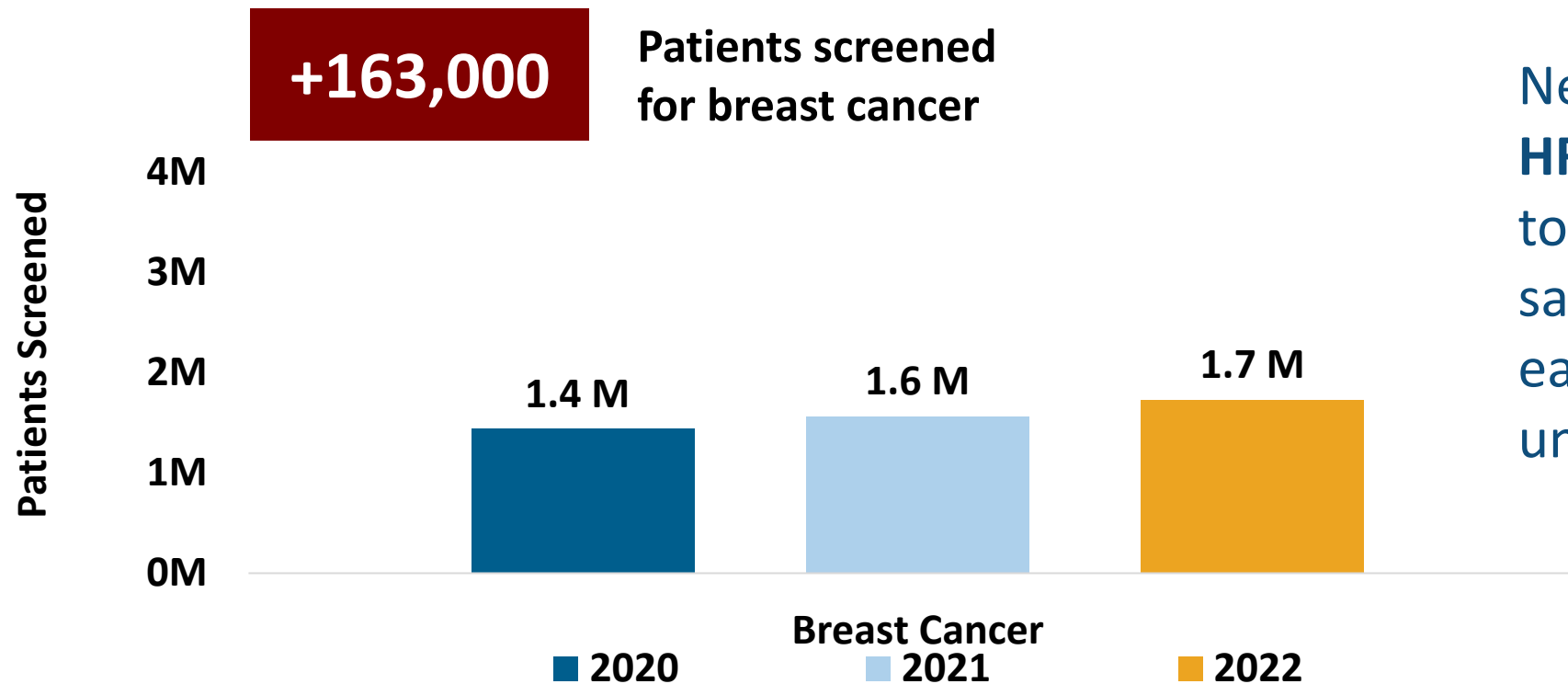
# PCMH Across the Nation



Source: HRSA EHBs, Q2 2023.

# Increasing Breast Cancer Screening

Health centers leveraged FY 2023 Accelerating Cancer Screening (AxCs) funding to expand breast cancer screening.



Nearly **\$11 million** to **22 HRSA-funded health centers** to improve access to life-saving cancer screenings and early detection services for underserved communities.



Source: Uniform Data System 2020-2022 – Table 6B.

Breast cancer screening CQM was added to UDS in 2020; patients screened based on those that met CQM inclusion criteria.





# Breast Cancer Awareness Month: Join Us



## The Role of Clinicians in Promoting Awareness of Alcohol as a Risk Factor for Cancer

Wednesday, October 25, 3 – 4 p.m. ET

[Register](#)



# On My Mind





# FY 2024 Funding

New Funding	President's Budget	House/Senate Action to Date
Behavioral Health Services (mandatory)	\$700 million	TBD
Expanded Hours (mandatory)	\$250 million	TBD
New Access Points (mandatory)	\$150 million	TBD
<i>Primary Care HIV Prevention (discretionary)</i>	<i>\$15 million new</i>	<i>House &amp; Senate – no increase</i>
<i>Early Childhood Development (discretionary)</i>	<i>\$55 million new</i>	<i>House &amp; Senate – no increase</i>
<i>Cancer Screening (discretionary)</i>	<i>\$10 million new</i>	<i>House &amp; Senate – no increase</i>

Ongoing Program Funding	President's Budget	House/Senate Action to Date
Quality Improvement Fund	\$50 million	<i>House &amp; Senate – no increase</i>
Primary Care Associations	\$68 million	<i>House &amp; Senate – no increase</i>
Service Area Competition	\$1.7 billion	<i>House &amp; Senate – no increase</i>
Native Hawaiian	\$27 million	<i>House &amp; Senate – no increase</i>



# Share Your Photos with Us



## Use [BPHC Contact Form](#)

- Under General/Other HRSA, select *Other Topics*
- Mention *World AIDS Day 2023*
- Submit:
  - ✓ Names and titles of people in the picture(s)
  - ✓ Two or three sentences about the event as applicable
- Upload:
  - ✓ Completed [Photo Release Form](#)
  - ✓ Picture(s)

# Mark Your Calendar

---

## Today with Macrae: Health Center Program Updates

- [Tuesday, November 28, 2023, 2 – 3 p.m. ET](#)
- [Tuesday, January 23, 2024, 3 – 4 p.m. ET](#)

*Join Us!*

# Questions?

---



# Thank You!

Bureau of Primary Health Care (BPHC)

Health Resources and Services Administration (HRSA)



[Health Center Program Support](#)



877-464-4772, 8 a.m. – 8 p.m. ET, Monday – Friday (except federal holidays)

---

[bphc.hrsa.gov](http://bphc.hrsa.gov)



[Sign up for the \*Primary Health Care Digest\*](#)



# Connect with HRSA

Learn more about our agency at:

[www.HRSA.gov](http://www.HRSA.gov)



[Sign up for the HRSA eNews](#)

FOLLOW US:





# Appendix



# Data Table: PCMH Across the Nation

State	Percentage
CO	100%
CT	100%
DC	100%
GU	100%
MO	100%
MP	100%
MT	100%
RI	100%
VT	100%
NM	94%
OR	93%
WA	93%
VA	92%
MA	92%

State	Percentage
NH	89%
MN	88%
FL	87%
MI	87%
AZ	87%
ID	86%
NE	86%
NY	86%
AR	83%
ME	83%
MD	82%
NC	82%
OH	80%
IL	80%
WY	80%
IA	79%
SC	78%

State	Percentage
NJ	77%
HI	77%
UT	77%
AL	76%
PR	76%
TX	76%
KY	76%
WV	71%
IN	70%
MS	70%
LA	69%
WI	69%
GA	69%
KS	68%
DE	67%
PA	67%
CA	66%

State	Percentage
TN	62%
OK	62%
AK	52%
ND	50%
NV	50%
SD	50%
VI	50%
AS	0%
FM	0%
MH	0%
PW	0%



Source: HRSA EHBs, Q2 2023.

# Data Table: Increasing Breast Cancer Screening

Screening Type	2020	2021	2022
Breast Cancer	1,438,426	1,557,112	1,719,755



Source: Uniform Data System 2020-2022 – Table 6B.

Breast cancer screening CQM was added to UDS in 2020; patients screened based on those that met CQM inclusion criteria.

