

## Patients by ZIP Code

### **PURPOSE:**

The Patients by ZIP Code Table identifies patients by both their ZIP code of residence and their primary medical insurance.

### **CHANGES:**

- There are no changes to the ZIP Code Table reporting requirements for 2021.

### **KEY TERMS:**

**PATIENTS:** Individuals who have one or more face-to-face or virtual UDS-countable visit(s) during the calendar year.

**PATIENTS BY ZIP CODE:** Patients according to the ZIP code on file as of the last visit.

**OTHER ZIP CODE PATIENTS:** Patients from ZIP codes from which 10 or fewer patients were served.

**UNKNOWN RESIDENCE PATIENTS:** Patients for whom residence is not known and for whom a proxy is not available.

**PRIMARY MEDICAL INSURANCE:** A patient's primary medical insurance as of the last visit during the calendar year. The insurance plan the health center would typically bill first for medical services.

### **HOW DATA ARE USED:**

- Information is used to map health center service area data and relate patients to community population and resources.
- Data are combined across health centers to enable BPHC and health centers to examine total program reach, remaining need, and to avoid service area overlaps.
- Maps and data can be accessed using an online tool, the UDS Mapper (see page 2): <http://www.udsmapper.org/>

### **TABLE TIPS:**

- ZIP codes with ten or fewer patients should be aggregated, and patients reported as "Other."
- Patients whose ZIP code is not known should be reported as "Unknown Residence."
- In general, the total number of patients with "Other" and "Unknown" ZIP codes should not exceed 15 percent of total patients unless there is a clear programmatic reason.
- **HOMELESS PATIENTS:** Use ZIP code of location where patient receives services if no better data exists.
- **MIGRANT PATIENTS:** Use ZIP code of the patient's temporary local housing if available or locations where patient receives service.
- **FOREIGN NATIONALS:** Use current ZIP code for people from other countries who reside in the United States either permanently or temporarily. Tourists and other people who have permanent residence outside the United States should be reported as "Other ZIP code."
- Medical insurance information must be obtained for all health center patients, regardless of the type of services received (e.g., report a dental patient by primary medical insurance, not dental insurance).
- The information in this Table is to be updated each calendar year.

### **CROSS TABLE CONSIDERATIONS:**

Patients by ZIP Code, Tables 3A, 3B, and 4 describe the SAME PATIENTS and the totals must be equal (*shown on Table 3A Fact Sheet*).

The number of patients by insurance source reported on the ZIP Code Table must be consistent with the number of patients by insurance category reported on Table 4.

## Patients by ZIP Code

### PATIENTS BY ZIP CODE:

Zip Code (a)	None/Uninsured (b)	Medicaid/CHIP/Other Public (c)	Medicare (d)	Private Insurance (e)
03301				
03302				
Other				
Unknown				

**Note:** This is a representation of the form. However, the actual online input process will look significantly different, as may the printed output from the EHB.

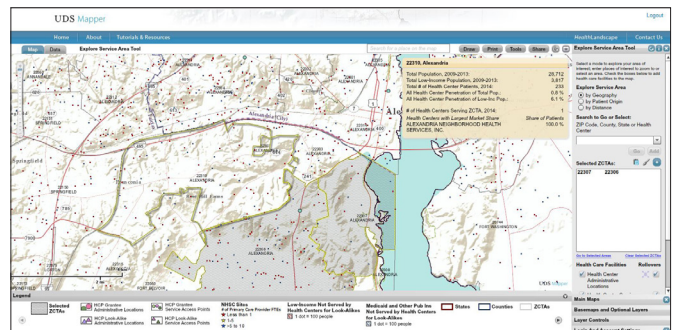
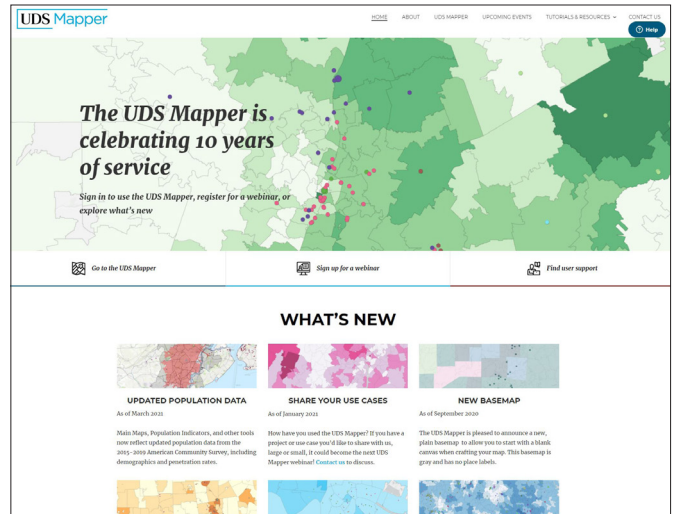
### UDS MAPPER LAYERS:

#### MAIN MAP LAYERS

- Health center dominance
- FQHC penetration (low income/total)
- Count of health centers serving area
- Change in patients served (1 & 2 year)
- Census demographics

#### OPTIONAL LAYERS

- Health center locations/sites
- Other federally linked providers
- HPSA/MUA/MUP boundaries
- Census boundaries/roads
- Background maps/satellite images
- Areas of Priority for Medication-Assisted Treatment (MAP for MAT)



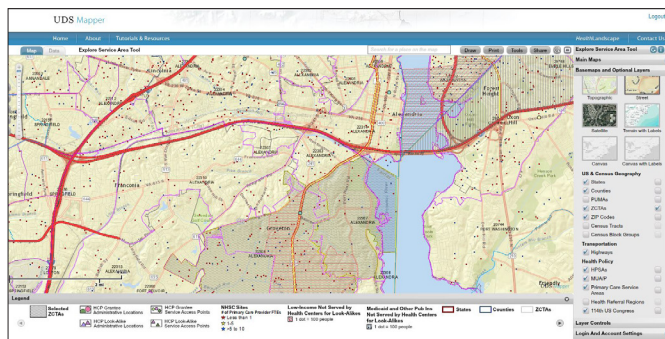
For more detailed information see UDS Reporting Requirements for 2021 Health Center Data, pages 23 – 26.

## Patients by ZIP Code

### USE THE UDS MAPPER TOOL TO:

- Visualize relationships between patients, population, and health services.
- Identify potential areas of need and quantify potential resources needed.
- Explore relationships with nearby health centers.
- Plan for growth or changes in service delivery network.
- Generate maps and data for grant applications and other presentations.

More information on the UDS Mapper Tool is available online at <http://www.udsmapper.org/>



The screenshot shows the UDS Mapper interface with a data table. The table has columns for ZIP Code, Health Center, and Population. The data is organized into a grid with rows for each ZIP code and columns for different metrics.

ZIP Code	Health Center	Population	Population of ZIP Code	Population of Total Pop
90001	10	17,125	17,125	17.1%
90002	10	17,125	17,125	17.1%
90003	10	17,125	17,125	17.1%
90004	10	17,125	17,125	17.1%
90005	10	17,125	17,125	17.1%
90006	10	17,125	17,125	17.1%
90007	10	17,125	17,125	17.1%
90008	10	17,125	17,125	17.1%
90009	10	17,125	17,125	17.1%
90010	10	17,125	17,125	17.1%
90011	10	17,125	17,125	17.1%
90012	10	17,125	17,125	17.1%
90013	10	17,125	17,125	17.1%
90014	10	17,125	17,125	17.1%
90015	10	17,125	17,125	17.1%
90016	10	17,125	17,125	17.1%
90017	10	17,125	17,125	17.1%
90018	10	17,125	17,125	17.1%
90019	10	17,125	17,125	17.1%
90020	10	17,125	17,125	17.1%
90021	10	17,125	17,125	17.1%
90022	10	17,125	17,125	17.1%
90023	10	17,125	17,125	17.1%
90024	10	17,125	17,125	17.1%
90025	10	17,125	17,125	17.1%
90026	10	17,125	17,125	17.1%
90027	10	17,125	17,125	17.1%
90028	10	17,125	17,125	17.1%
90029	10	17,125	17,125	17.1%
90030	10	17,125	17,125	17.1%
90031	10	17,125	17,125	17.1%
90032	10	17,125	17,125	17.1%
90033	10	17,125	17,125	17.1%
90034	10	17,125	17,125	17.1%
90035	10	17,125	17,125	17.1%
90036	10	17,125	17,125	17.1%
90037	10	17,125	17,125	17.1%
90038	10	17,125	17,125	17.1%
90039	10	17,125	17,125	17.1%
90040	10	17,125	17,125	17.1%
90041	10	17,125	17,125	17.1%
90042	10	17,125	17,125	17.1%
90043	10	17,125	17,125	17.1%
90044	10	17,125	17,125	17.1%
90045	10	17,125	17,125	17.1%
90046	10	17,125	17,125	17.1%
90047	10	17,125	17,125	17.1%
90048	10	17,125	17,125	17.1%
90049	10	17,125	17,125	17.1%
90050	10	17,125	17,125	17.1%