

WELCOME!

- We'll get started momentarily.
- Your microphone, video, and chat features are not needed and will remain deactivated.
- To view closed captioning, select *Closed Captioning* from the three-dots icon, and then *View Sub-titles*
- Please submit questions at any time in the Q&A feature.
- If you still have questions at the end of this session, please contact your Project Officer or Health Center Program Support.





Today with Macrae: Health Center Program Updates

Tuesday, July 27, 2021

Jim Macrae
Associate Administrator
Bureau of Primary Health Care (BPHC)

Vision: Healthy Communities, Healthy People



Today with Macrae: Health Center Program Updates

AGENDA

- ☐ Observance
- ☐ Funding and Program Updates
- ☐ Mark Your Calendar
- ☐ Q&A

Intersection of Substance Use, HIV, and HCV: What Behavioral Health Providers Need to Know

Part 1: Alcohol, HIV, and HCV

Wednesday, July 7

2:00-3:30 p.m. ET

[Watch Part 1 Recording](#)

Part 2: Opioids, HIV, and HCV

Wednesday, September 8

2:00-3:30 p.m. ET

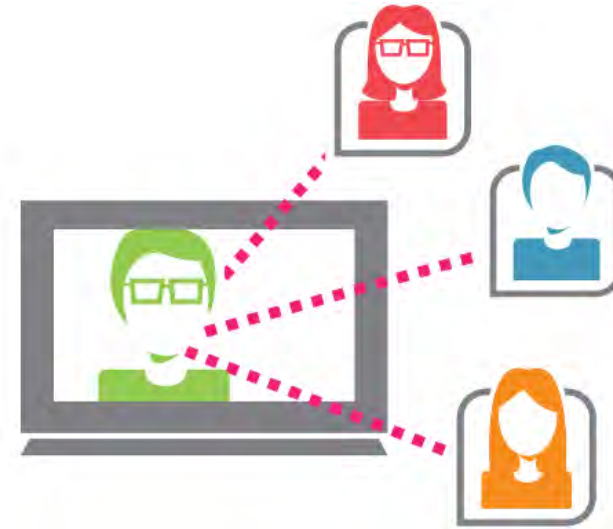
[Register for Part 2](#)

Part 3: Stimulants, HIV, and HCV

Wednesday, October 13

2:00-3:30 p.m. ET

[Register for Part 3](#)



On My Mind



**National Health
Center Week**



2020 UDS Data

Upcoming Dates



- Public Data Release
 - 2020 UDS Data available Monday, August 9, via <https://data.hrsa.gov/tools/data-reporting>
- 2020 UDS Trends Webinar
 - Tuesday, August 10, 3:30-4:30 p.m. ET
 - ✓ [Register today!](#)

Primary Health Care Priorities

Vision: Every high-need community has access to the health center model of care.

- **Goal:** Increase access to the health center model of care in the nation's highest need communities and populations.

Vision: All health center patients have access to patient-centered services that address both clinical and social barriers to health.

- **Goal:** Increase access to a comprehensive range of services for health center patients.

Vision: Health centers lead the nation in delivering high quality care that advances health equity for underserved and vulnerable populations.

- **Goal:** Activate and accelerate evidence-based, innovative models of care delivery to improve health outcomes, reduce health disparities, and advance health equity for underserved and vulnerable populations.

Vision: Health centers operate state of the art facilities that optimize service delivery in medically underserved communities.

- **Goal:** Upgrade, modernize, and expand facilities to support expanded access to high quality care, advance health center performance, and enable and support evolving health care delivery models.



Health Insurance Marketplace – 2021 Special Enrollment Period through August 15



- **Recruit and equip** trusted messengers and assisters to engage your patients
- **Encourage** your patients to get covered
- Check out CMS' [4 Tips About the Marketplace](#)

Emergency Preparedness Webinar



- Coordinating Federal, State, Tribal, Regional, Local requirements
- Overview of the Federally Qualified Healthcare Center (FQHC) Medicare program
- Coordinating plans across multiple health center sites
- Climate as an emergency
- Review each of the core elements of the Emergency Preparedness Program

Emergency Preparedness Information Session with CMS

Wednesday, September 15

11:30 a.m.-1:00 p.m. ET

[Register](#)

CDC's *Learn the Signs. Act Early.* Program



1 in 6 children has a developmental delay or disability

Developmental surveillance

- ✓ At each health supervision visit

General developmental screening (e.g., ASQ, PEDS, SWYC)

- ✓ 9, 18, and 30 months

Autism specific screening (e.g., MCHAT-R with follow-up questions)

- ✓ 18 and 24 months

Note:

ASQ – Ages and Stages Questionnaires

PEDS – Parents' Evaluation of Development Status

SWYC – Survey of Well-being of Young Children

MCHAT – R – Modified Checklist for Autism in Toddlers, Revised with follow-up questions



CDC's *Learn the Signs. Act Early.* Resources

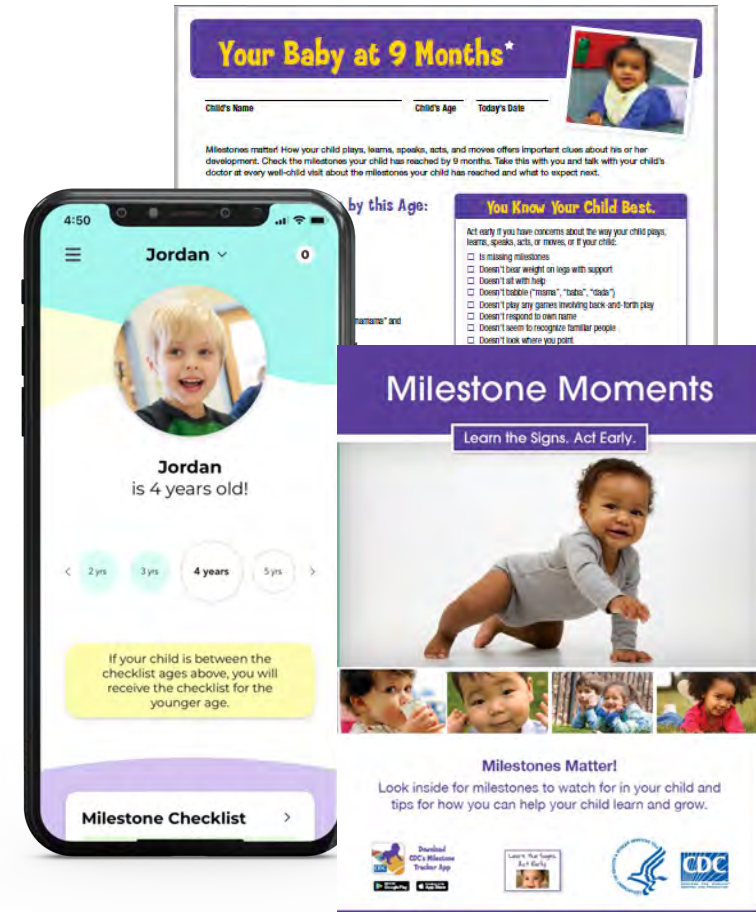


- Email ActEarly@cdc.gov to join “CDC’s Learn the Signs. Act Early. in Federally-Qualified Community Health Centers” Wednesday, August 18, 3 p.m. ET
- Free and flexible to meet your health center needs
- Available in English, Spanish, and multiple other languages
- Free online trainings are available

For more information visit: www.cdc.gov/ActEarly/Materials

For healthcare specific information visit: www.cdc.gov/ActEarly/Healthcare

For questions or if you are using *Learn the Signs. Act Early* materials and would like to share your experience with other health centers, contact Dr. Jennifer Zubler at wv4@cdc.gov.



DATA 2000 Waiver Training Payment Program— Now Available

\$3,000 payment per eligible* practitioner

- Payment is made to FQHCs or RHCs, not the practitioners
- No deadline to apply
- Payments made on a **first-come, first-served** basis until funds are expended
- Access the application through the EHBs
- After logging into the EHBs, click the **Organizations** tab from the **Menu** bar

Resources

[DATA 2000 Waiver Training Payment Program FAQs](#)

Contact DATA2000waiverpayments@hrsa.gov



*Practitioners must have obtained a waiver on or after January 1, 2019.



Health Center Funding Updates



FY 2021 American Rescue Plan

Recently Awarded

- ✓ Funding Opportunity for Look-Alikes (L2C)

Upcoming Awards

- ✓ Funding Opportunity for Capital Improvements (C8E)
- ✓ Funding Opportunity for Native Hawaiian (H2C)



Additional Awards – Coming Soon

- ✓ Health Center Program Service Expansion: School-Based Service Sites (SBSS)
- ✓ Ending the HIV Epidemic- Primary Care HIV Prevention (PCHP)



FY 2022 Budget

- ✓ \$50 million for Ending the HIV Epidemic
- ✓ \$50 million for Optimizing Virtual Care



COVID-19 Vaccines Administered to Date by Health Centers: Special Populations Receiving Doses

Through the Health Center COVID-19 Vaccine Program, a total of **5,711,082 COVID-19 vaccine doses** have been administered by participating health centers and look-alikes to date.

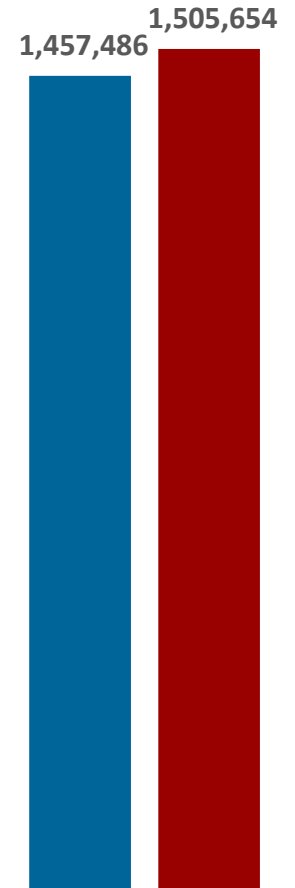
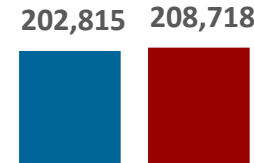
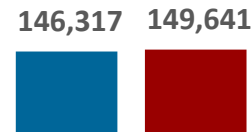
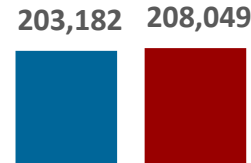
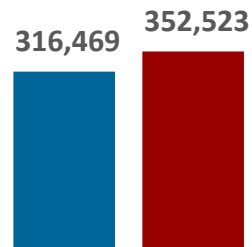
Patients with Limited English Proficiency:
26% (1,505,654) of doses

Patients Who Are Residents of Public Housing:
4% (208,718) of doses

Adolescents (Children less than 18 years)
6% (352,523) of doses

Migratory & Seasonal Agricultural Workers:
4% (208,049) of doses

Patients Experiencing Homelessness:
3% (149,641) of doses



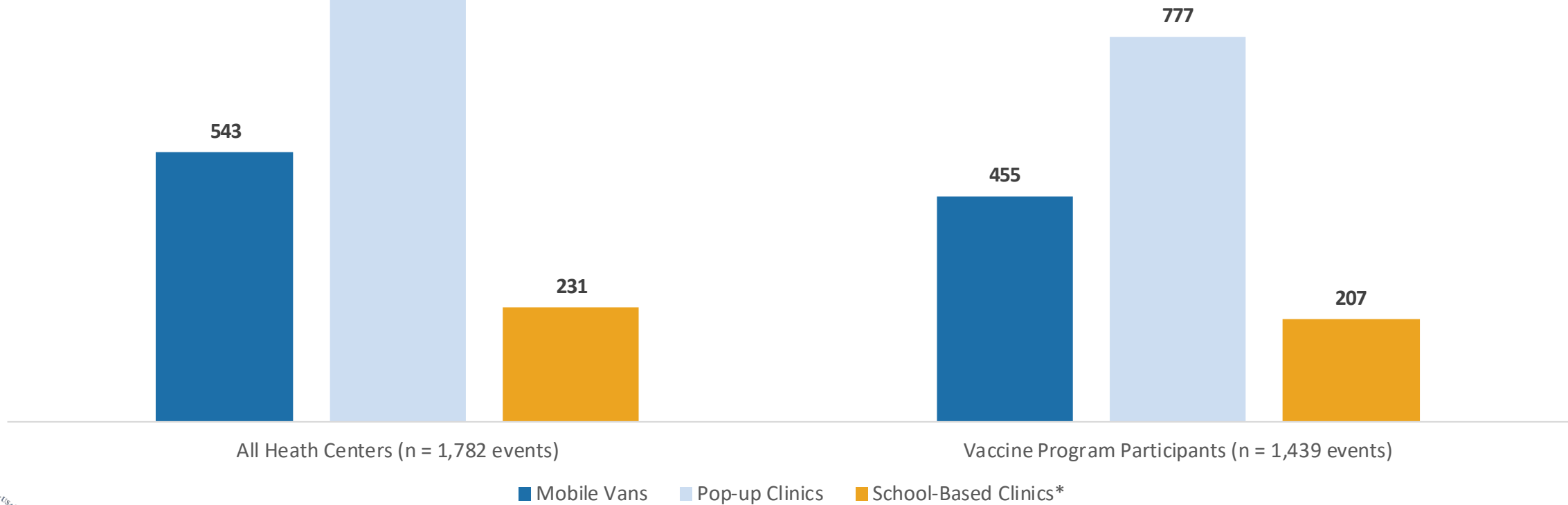
■ 2/26/2021-7/2/2021 ■ 2/26/2021-7/16/2021*

*Survey moved to bi-weekly reporting starting with the 7/16 survey
Source: [Health Center COVID-19 Bi-Weekly Survey, 2020-2021](#)



Community-Based Vaccination Efforts: Reporting Period Ending 7/16/2021

35% of all health centers and **39%** of vaccine program participants used mobile vans or held pop-up or school-based clinics to administer vaccines via a combined total of **1,782** community-based events in the last two weeks.



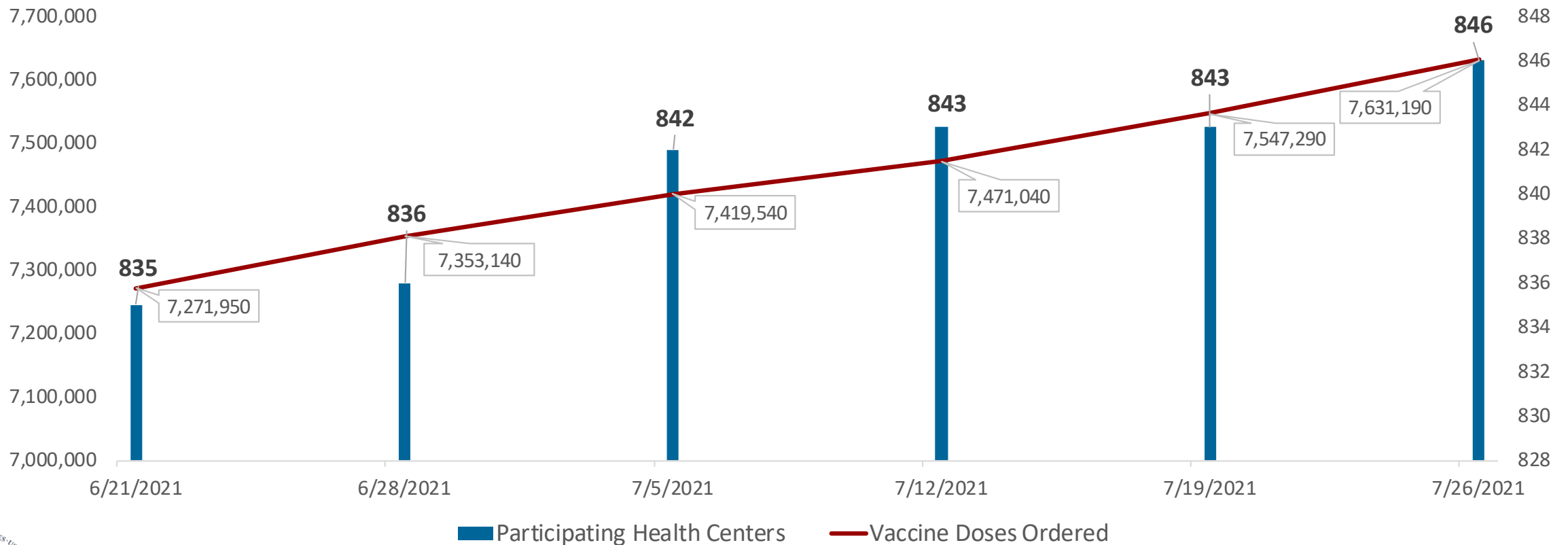
Source: [Health Center COVID-19 Bi-Weekly Survey, 2020-2021](#)

*Collection of school-based clinics data began with the 5/14/2021 survey



Health Center COVID-19 Vaccine Program: All Health Centers – Orders

To date, health centers have ordered **7,631,190** doses for **2,285** sites.



Source: Health Center COVID-19 Vaccine Program Weekly Orders



Million Hearts® Hypertension Control Exemplar

The Million Hearts® initiative recognized **Philadelphia FIGHT** for their outstanding efforts to prioritize hypertension treatment during the COVID-19 pandemic.

Philadelphia FIGHT supported over 5,000 patients with their anti-hypertension medication adherence needs during the COVID-19 pandemic, delivering medications directly to the homes of approximately 600 patients.



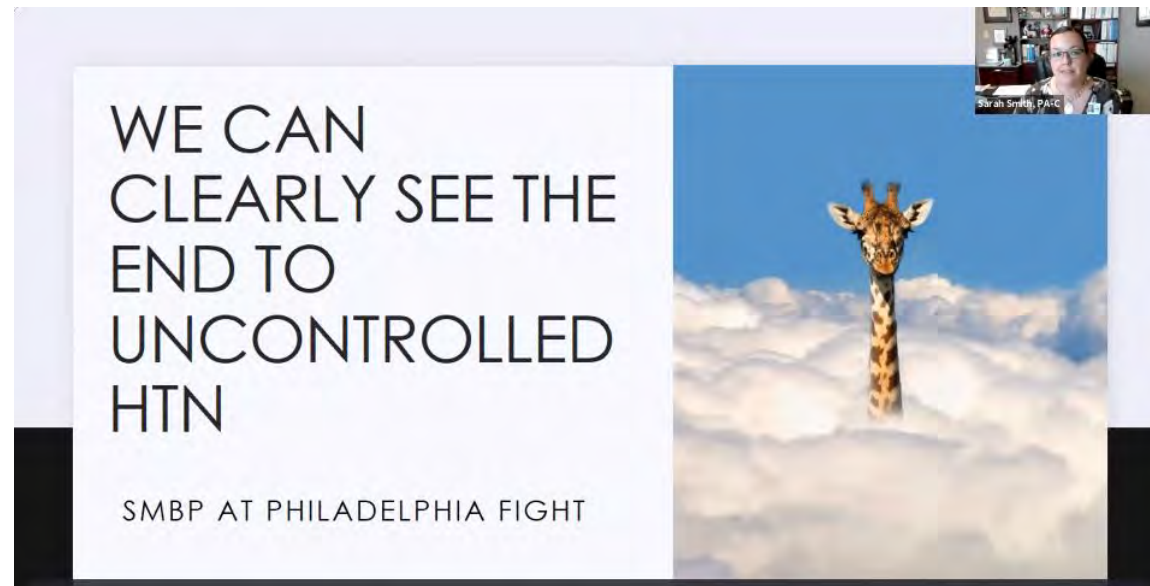
Visit the [Million Hearts® website](#) to [read previous success stories](#) and [find evidence-based tools to improve hypertension control](#).



Philadelphia FIGHT Featured in Webinar Series

Watch the Self-Measured Blood Pressure Monitoring (SMBP) webinar series:

- [Best Practices for Implementing SMBP](#)
- [Challenges and Lessons Learned from Implementing SMBP \(Stories from the Field\)](#)



Remember...

When you visit bphc.hrsa.gov –
take the survey that pops up



Mark Your Calendar

- Today with Macrae: Health Center Program Updates
 - Tuesday, September 21, 3-4 p.m. ET
 - Thursday, October 21, 3-4 p.m. ET
 - Tuesday, November 9, 3-4 p.m. ET
 - Wednesday, December 1, 3-4 p.m. ET

Join Us!



Questions?



Thank You!

Bureau of Primary Health Care (BPHC)

Health Resources and Services Administration (HRSA)



[Health Center Program Support](#)



877-464-4772, 8 a.m. to 8 p.m. ET, Monday - Friday (except federal holidays)

bphc.hrsa.gov



[Sign up for the *Primary Health Care Digest*](#)



Connect with HRSA

Learn more about our agency at:

www.HRSA.gov



[Sign up for the HRSA eNews](#)

FOLLOW US:

