



Alcee L. Hastings Program for Advanced Cancer Screening in Underserved Communities

**FY 2022 Accelerating Cancer Screening (AxCS) Funding
Opportunity (HRSA-22-154)
TA Webinar for Applicants**

Health Resources & Services Administration (HRSA)/Bureau of Primary Health Care (BPHC)

Vision: Healthy Communities, Healthy People



AGENDA

- Welcome from BPHC
- Funding Opportunity Overview
- Application Development
- Other Considerations and Reporting
- Technical Assistance Resources
- Questions and Answers

Welcome from BPHC



Funding Opportunity Overview



Purpose

- Increase equitable access to **cancer screening and referral** for care and treatment for populations served by health centers
- In close partnership or coordination with **National Cancer Institute (NCI)-designated Cancer Centers** that will deploy outreach specialists and patient navigators
- Enhance patient education, case management, outreach and other **enabling services**



Need for Health Center and Cancer Center Partnership

Need

- Disparities in screening and referral persist by race/ethnicity, socioeconomic status, and health care access
- Reductions in cancer screening occurred during the COVID-19 pandemic

Health Centers

- Key point of entry for breast, cervical, and colorectal cancer screening
- Provide enabling services to reduce screening and referral disparities for underserved populations

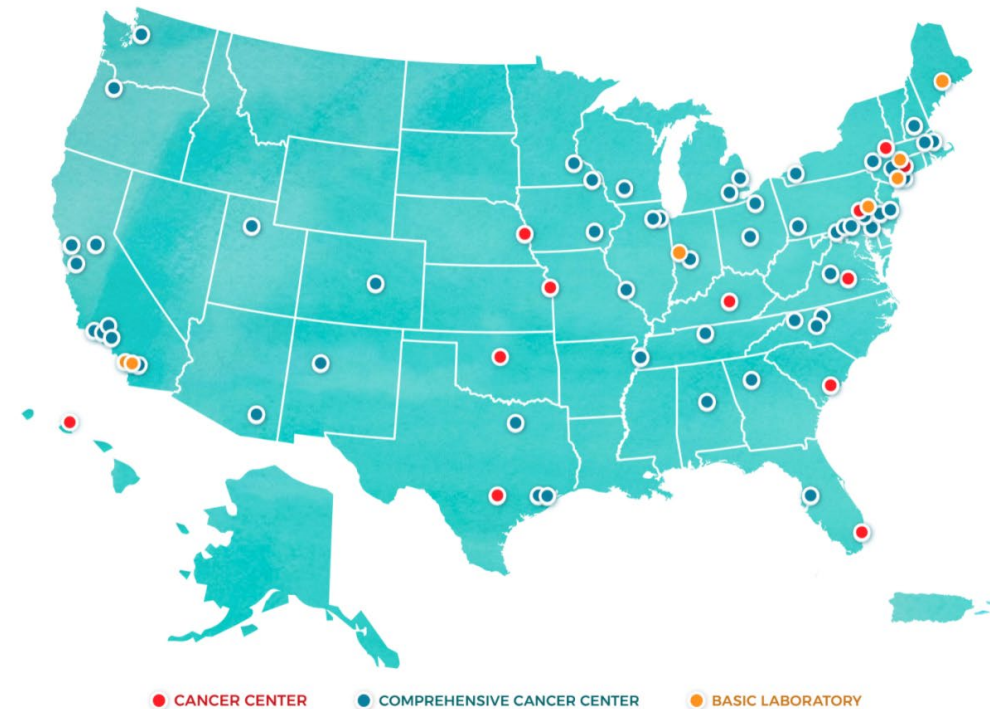
Cancer Centers

- Provide public education and outreach programs on cancer prevention and screening, with special attention to the needs of underserved populations
- Scientific leaders in efforts to reduce the unequal burden of cancer through research



NCI-Designated Cancer Center Overview

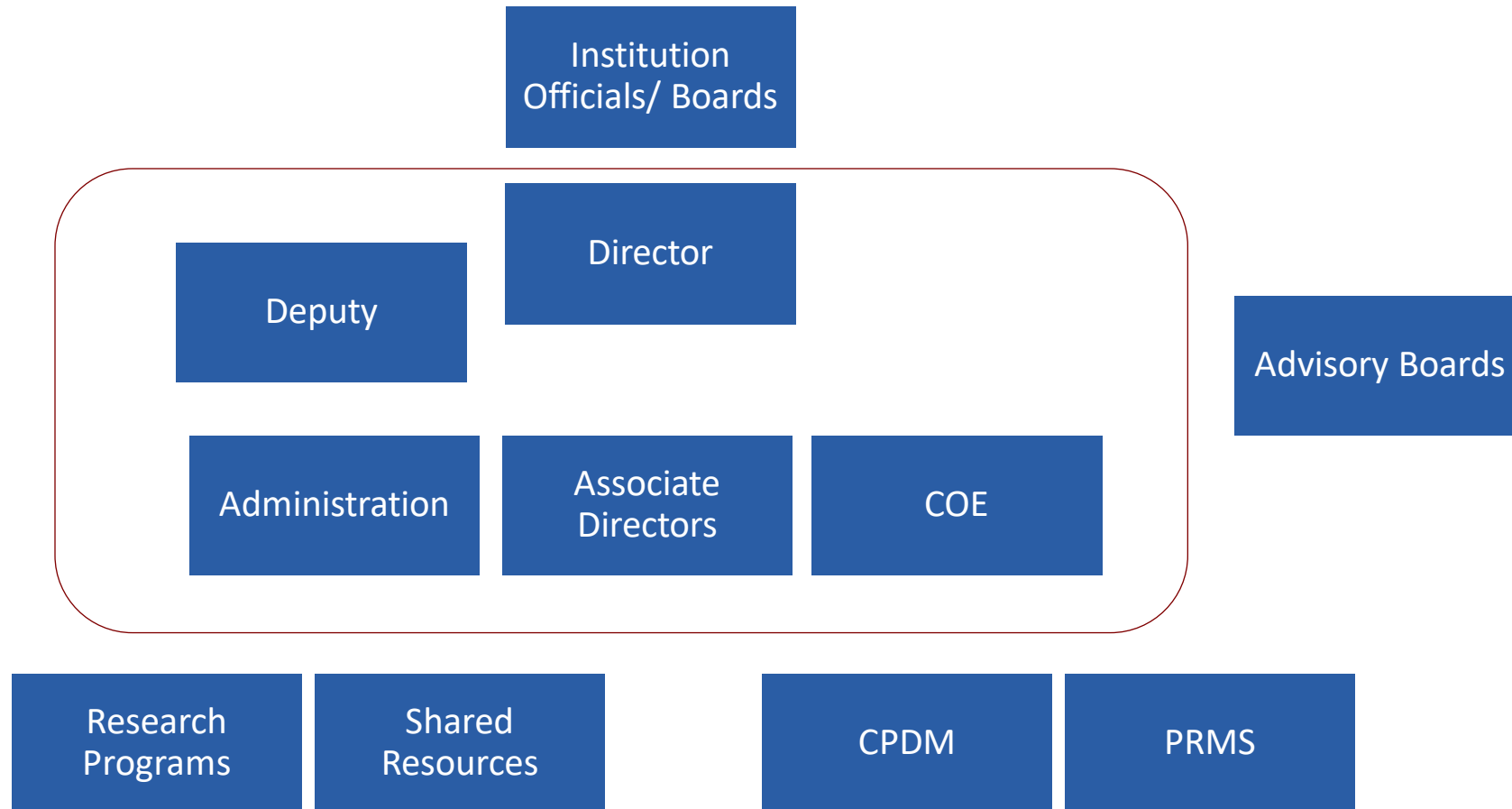
- 71 NCI-Designated Cancer Centers
 - Located across the U.S. (36 states and DC)
- NCI-Designated Cancer Centers:
 - Meet rigorous standards for state-of-the-art research focused on developing new and better approaches to preventing, diagnosing, and treating cancer
 - Deliver cutting-edge cancer treatments



[Source Link to NCI-Designated Cancer Center Overview](#)



Organizational Chart of a Cancer Center



Overview

- **Total Funding: \$5 million**
- **Expected Number of Awards: 10**
- **Max Per Award: \$500,000 (to spend over 2 years)**
- **Start Date: September 1, 2022**
- **New Grant Number: H8I**

Funding Objectives and Activity Focus Areas

Funding Objectives

Increase the number and percentage of patients screened for at least one of the following cancer types: cervical, breast, colorectal cancer

Increase the number of patients assisted with accessing appropriate follow-up care within 30 days of receiving an abnormal screening test result

Activity Focus Areas

Access and Affordability

Patient Experience

Screening

Workforce Development



Funding Beyond 2-Year Period of Performance

Possibility of ongoing funding based on year 2 budget narrative, dependent on:

- Progress on screening objective as measured through Uniform Data System (UDS) reports
- Progress on assisting with accessing follow-up care as measured through progress reports
- Availability of funding beyond the initial award

Eligibility

- Health Center Program operational grant award recipients (H80)
- Partner with an NCI-designated Cancer Center (submit documentation of partnership in application)



Application Development



Application Submission

- [Grants.gov](https://www.grants.gov) only
- Must not exceed 60 pages
- Components:
 - Forms
 - Attachments



Forms & Attachments

Forms

- SF-424: Application for Federal Assistance
- Project Abstract Summary
- Project/Performance Site Locations
- Grants.gov Lobbying Form
- Key Contacts
- Project Narrative Attachment Form
- SF-424A: Budget Information Form
- Budget Narrative Attachment Form

Note: Attached Project Narrative and Budget Narrative documents count toward page limit

Attachments

- Project Work Plan
- Partnership Documentation
- Letters of Support (if applicable)
- Summary of Contracts and Agreements (if applicable)
- Equipment List (if applicable)



SF-424A Budget Information Form

Section A

- Total funding request (up to \$500,000)
- Same subprogram proportions as current H80 grant

Section B

- Object class category breakdown
- Total aligns with total in Section A

Section C

- Non-federal resources by subprogram

Section E

- Leave blank



Budget Narrative

- Provides a detailed, line-item budget
- Totals must align with the SF-424A, Section B
- Includes a break-out by year 1 and year 2
- Outlines and explains all expenses
- Includes personnel justification table, if applicable



Ineligible Costs



Costs already supported with H80 or supplemental funding



Facility or land purchases; trailers or modular unit purchases



Vehicle purchases (mobile units are allowed)



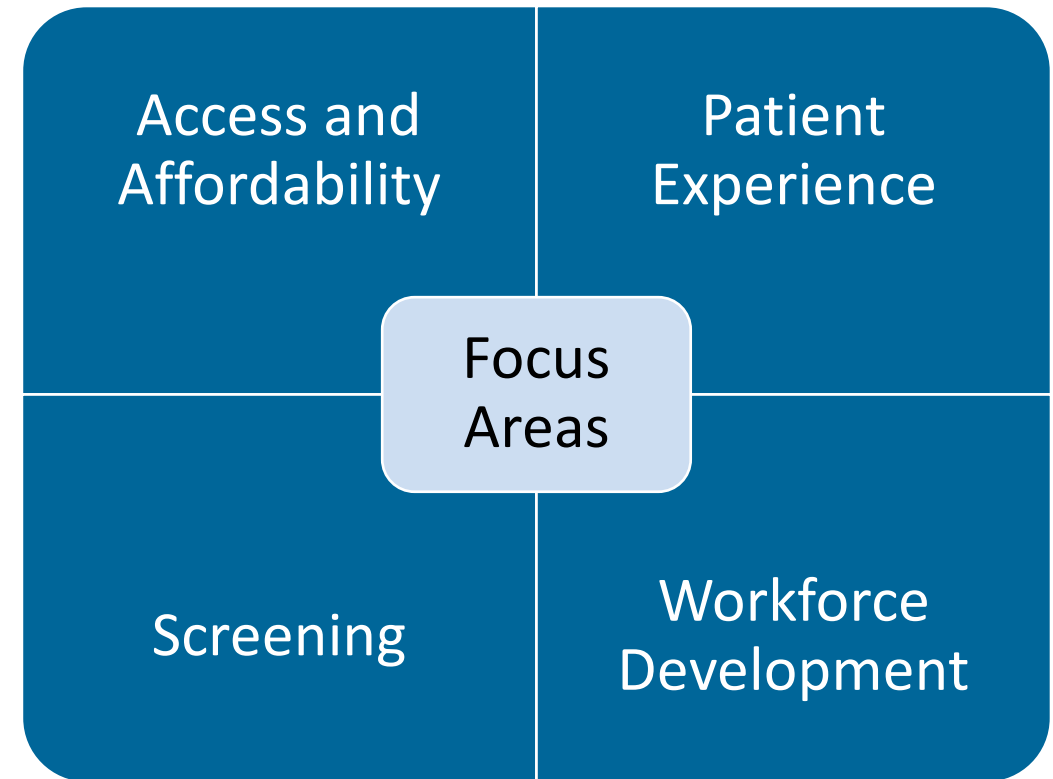
EHRs that are not ONC certified



Alterations and renovations; construction

Attachment: Project Work Plan

- Outline proposed 2-year plan of activities
 - **Focus Area Field:** All 4 focus areas are required
 - **Activity Field:** Minimum of 1 activity per focus area
 - **Timeframe Field:** Year 1, year 2, or ongoing
- Align with information in other application components



Example Activity Areas by Focus Area

- **Access and Affordability**
 - Outreach
 - Eligibility assistance
 - Transportation
 - Patient Navigation
- **Patient Experience**
 - Patient engagement and activation
 - Collaboration with families and caregivers
- **Screening**
 - Tracking patient screening, referrals, and follow up
 - Enhancing health IT workflows
- **Workforce Development**
 - Workforce recruitment
 - Workforce training
 - Workforce engagement



Attachment: Partnership Documentation

Defines nature of the health center-Cancer Center relationship

Describes collaboration and/or coordinated activities

Documents Cancer Center's commitment to deploy outreach staff & patient navigators

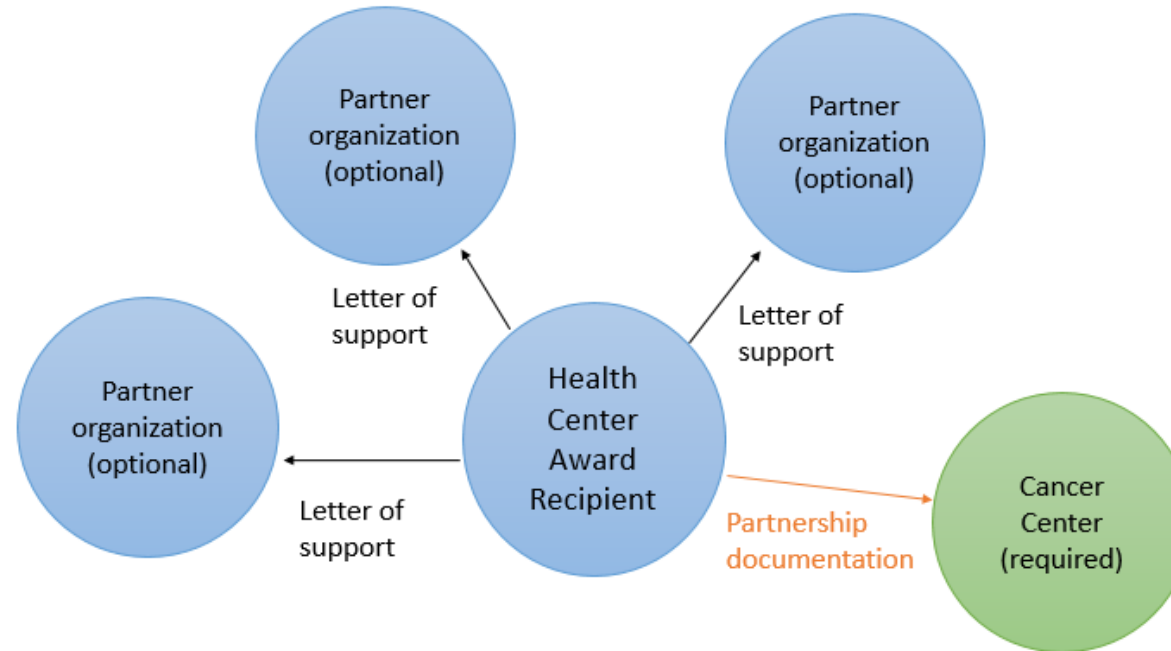
Is current and signed by Cancer Center's CEO or other key management



Partnership Structure

Partner Organization(s): Optional

- Leverage community outreach and engagement resources



NCI-designated Cancer Center: Required

- Deploy Cancer Center-trained and supervised outreach specialists and patient navigators
- Train health center personnel

Project Narrative & Review Criteria

Scoring

**Need
(20 pts)**

**Response
(20 pts)**

**Collaboration
(20 pts)**

**Resources/
Capabilities
(15 pts)**

**Evaluative
Measures
(15 points)**

**Support
Requested
(10 pts)**



Other Considerations and Reporting



Other Considerations: **Award Factors**



Continued H80 grant status

No 30-day requirements-related conditions

Rural/urban funding considerations

Other Considerations: **Scope of Project**

Review scope (services, sites, and activities)



Submit requests for changes outside of AxCS application



Changes should be approved before implementation

Reminder: Contact your Health Center Program point of contact with scope questions

Reporting Requirements

- **Bi-annual Progress Reports**
 - Describe the status of your activities, progress, and barriers
 - In select reports, provide data on:
 - ✓ The number of patients assisted with accessing appropriate follow-up care within 30 days of receiving an abnormal cancer screening test result
 - ✓ The percentage of patients with referrals for care and treatment for which you receive a report from the provider to whom the patient was referred
- **Final Report**
 - Summarizes lessons learned and key accomplishments over the 2-year period of performance
 - Due within 90 days after the period of performance ends



Technical Assistance Resources



AxCS TA Webpage

<https://bphc.hrsa.gov/programopportunities/accelerating-cancer-screening>

NOFO

TA Contacts

**Presentation Slides
and Recording**

FAQs

**Example Budget
Narrative**

**Sample Project Work
Plan**



TA Contacts

Application Questions

- [BPHC Contact Form](#)
 - Under *Funding*, select *Applications* (e.g., NOFOs)
 - Select *Accelerating Cancer Screening (AxCS)*
 - Enter your contact information
- 301-594-4300

Grants.gov Issues

- [Grants.gov Contact Center](#)
- 800-518-4726

Budget Questions

- Clare Oscar
- coscar@hrsa.gov



Key Takeaways

- Partnership with an NCI-designated Cancer Center is required
 - Documentation required in the application
 - ✓ Signed by the Cancer Center
 - ✓ Commitment to deploy Cancer Center outreach specialists & patient navigators
 - ✓ Documentation of specific collaboration and/or coordinated activities
- You must address one or more of the following cancer types through your project:
 - Colorectal
 - Breast
 - Cervical
- Application is [Grants.gov](https://www.grants.gov) only (no EHBs component)



Questions



Thank You!

AxCS Technical Assistance Team

Bureau of Primary Health Care (BPHC)

Health Resources and Services Administration (HRSA)



[BPHC Contact Form](#)

bphc.hrsa.gov



Sign up for the [Primary Health Care Digest](#)

